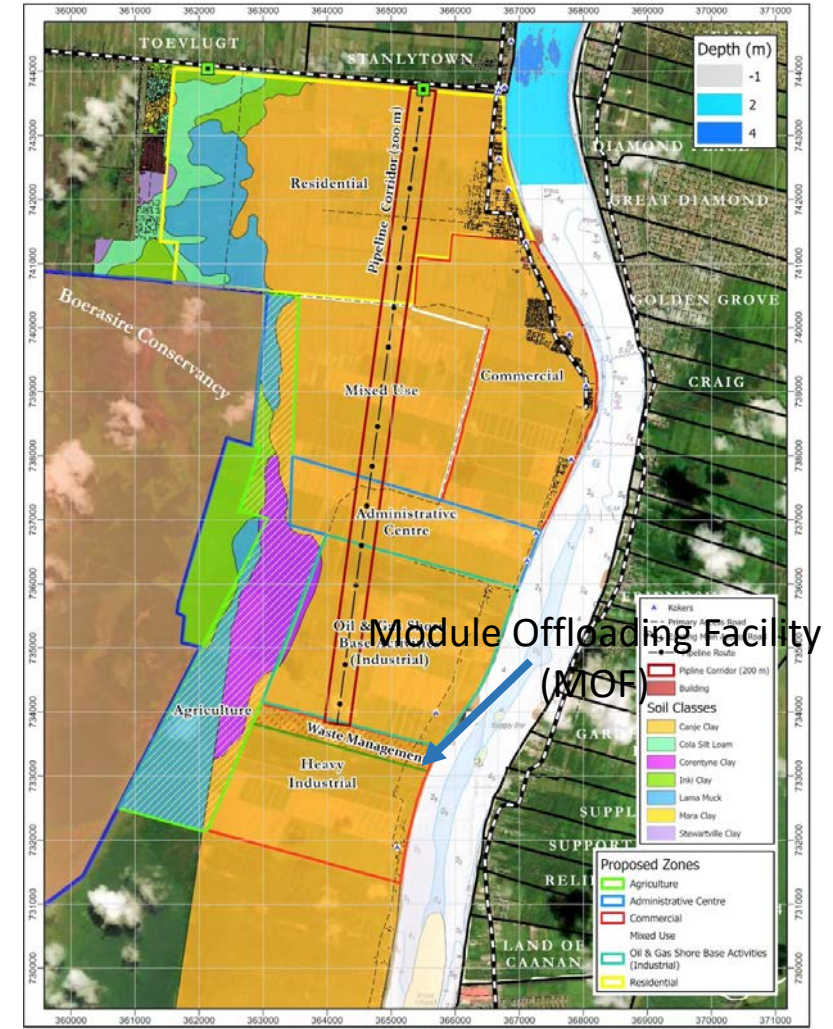
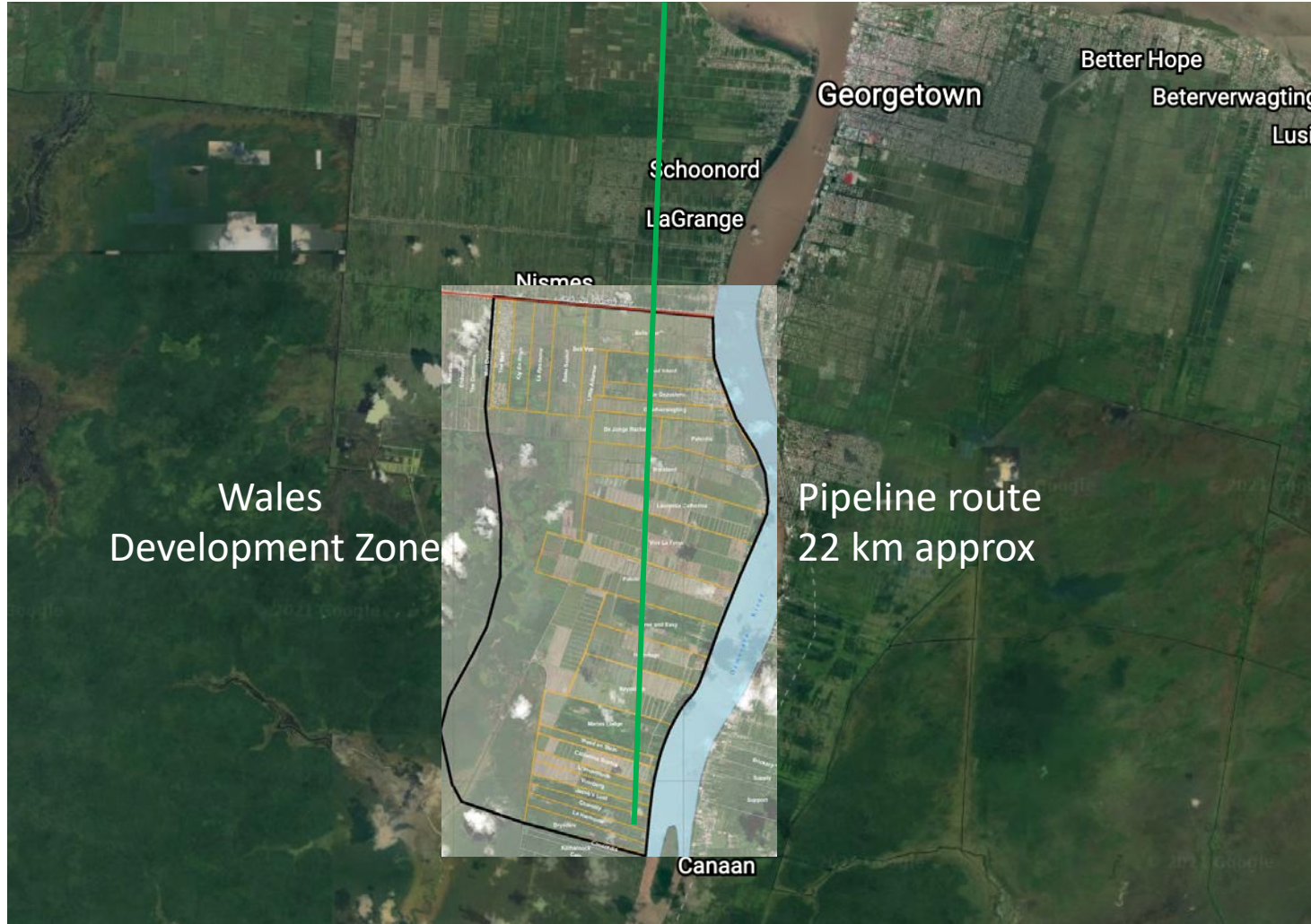




**Wales Development  
Preliminary Gas Utilisation Study  
Press Briefing**

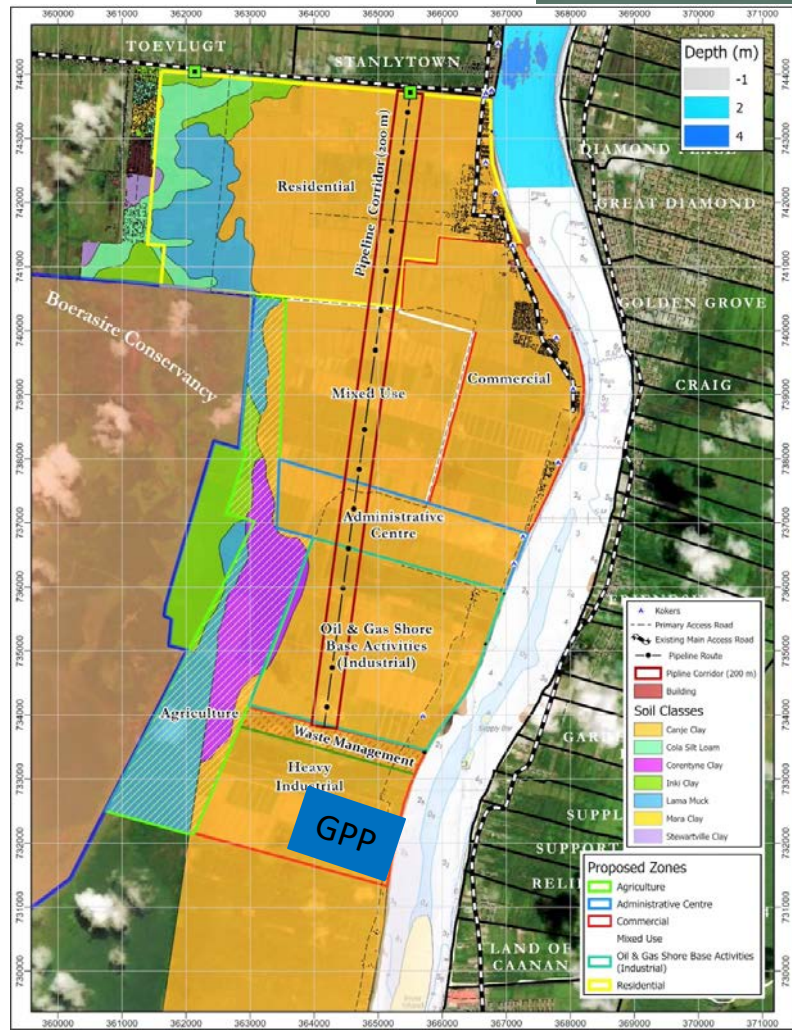
**26<sup>th</sup> April 2021**

# Wales Development Zone

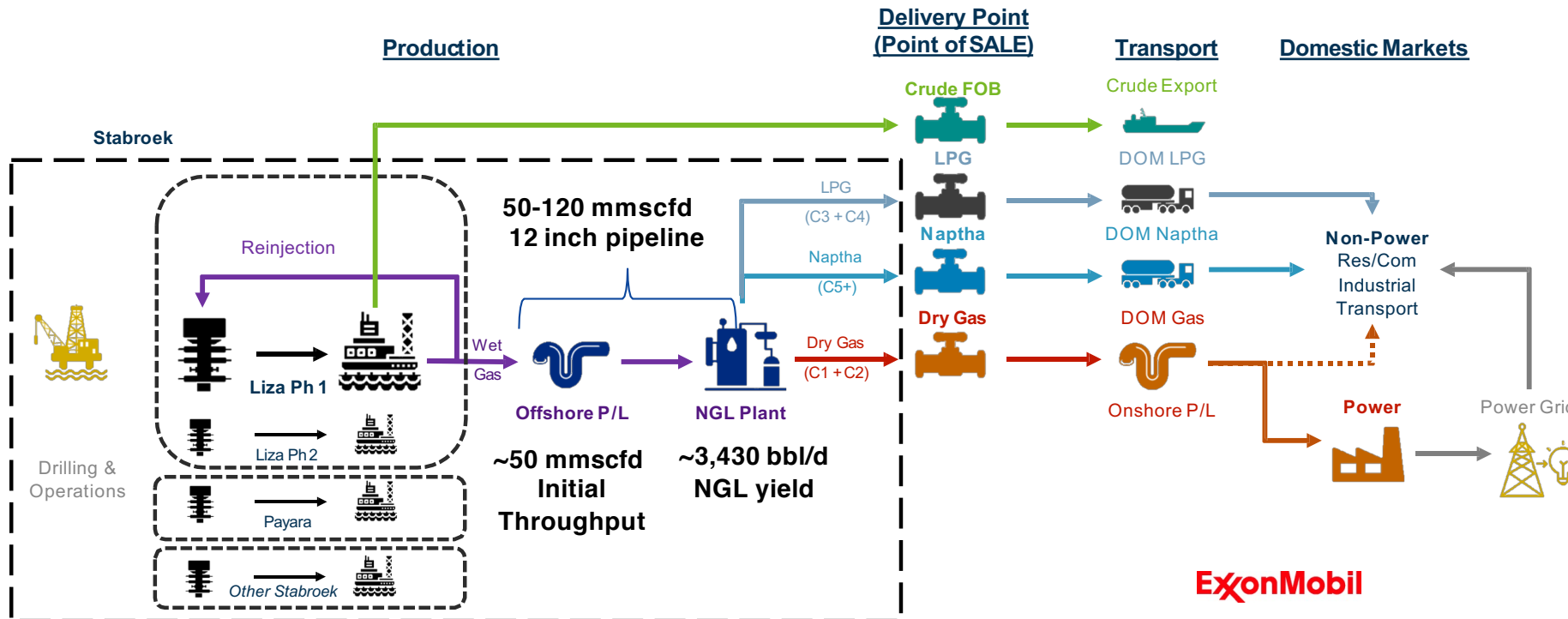




# Wales Industrial Area Layout



# Gas processing schematic

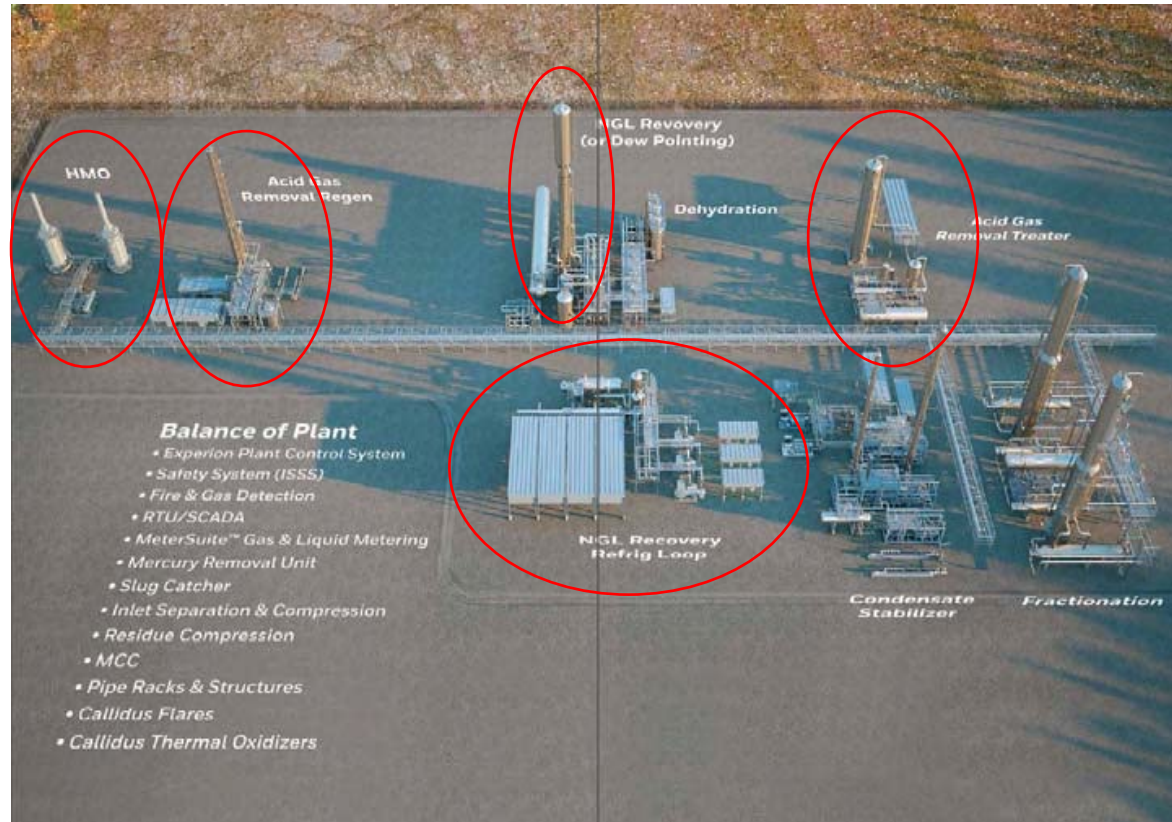


	Wet gas	LPG mix
	Propane 66.24%	Propane 70%
	Butane 33.76%	Butane 30%
n-Propane	6.525	66.24%
i-Butane	0.92	33.76%
n-Butane	2.405	
	9.85	

- NGLs include: Plant Condensate, Propane and Butane
- Propane and Butane combine to make LPG
- NB: Treatment of naphtha to be considered separately
- Natural gas comprised primarily Methane and Ethane



# Gas Processing Plant (GPP)

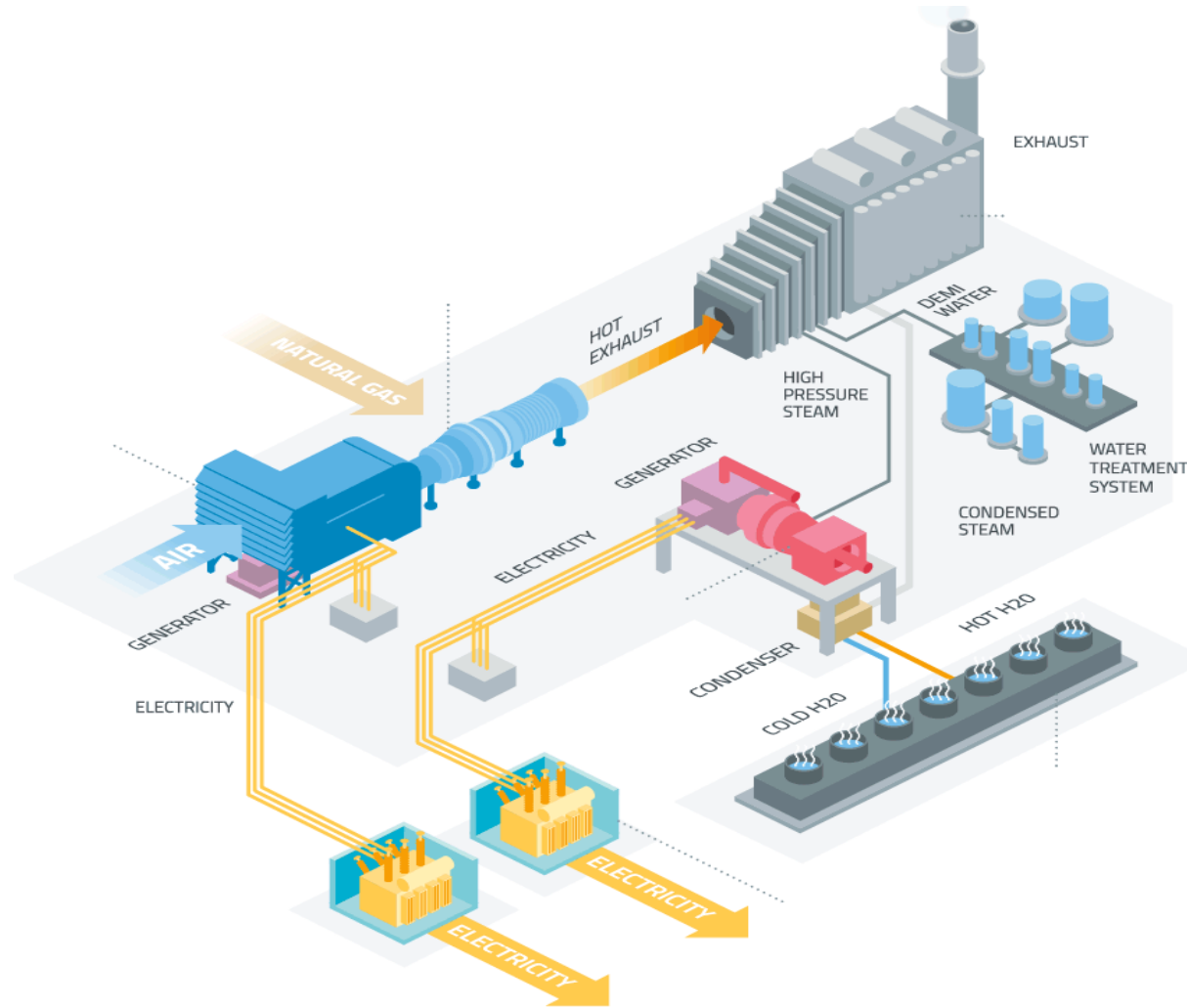


XOM proposed configuration



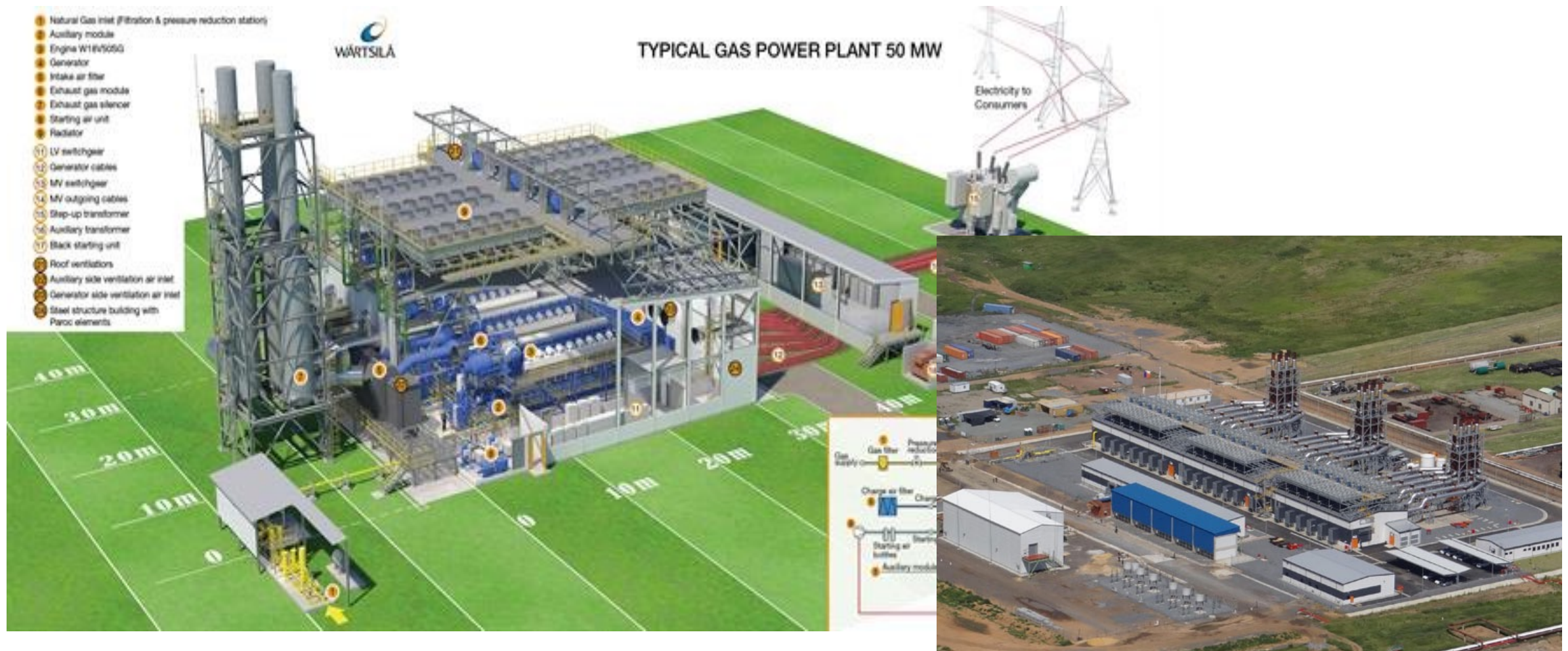
Simplified configuration

# Closed-Cycle Gas Turbine Plant

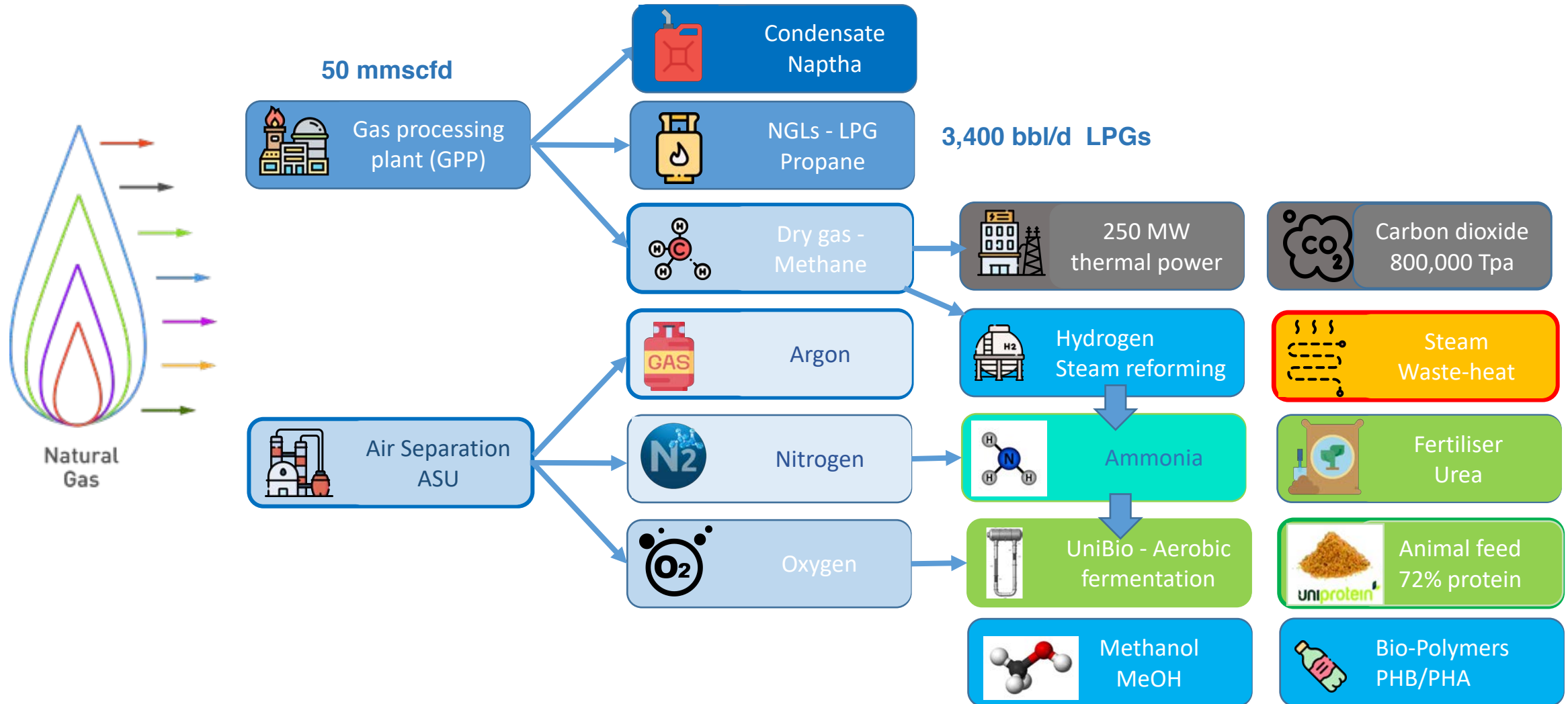




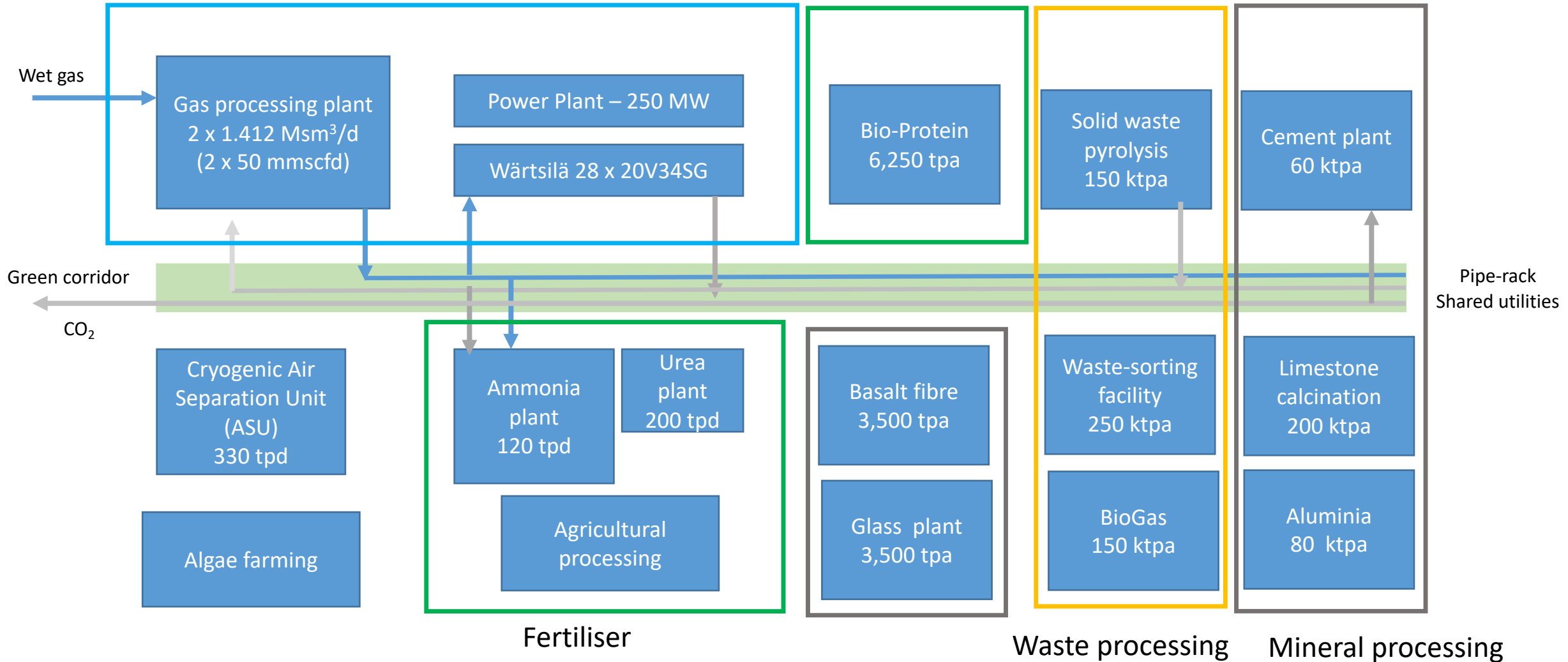
# Gas Engine Plant



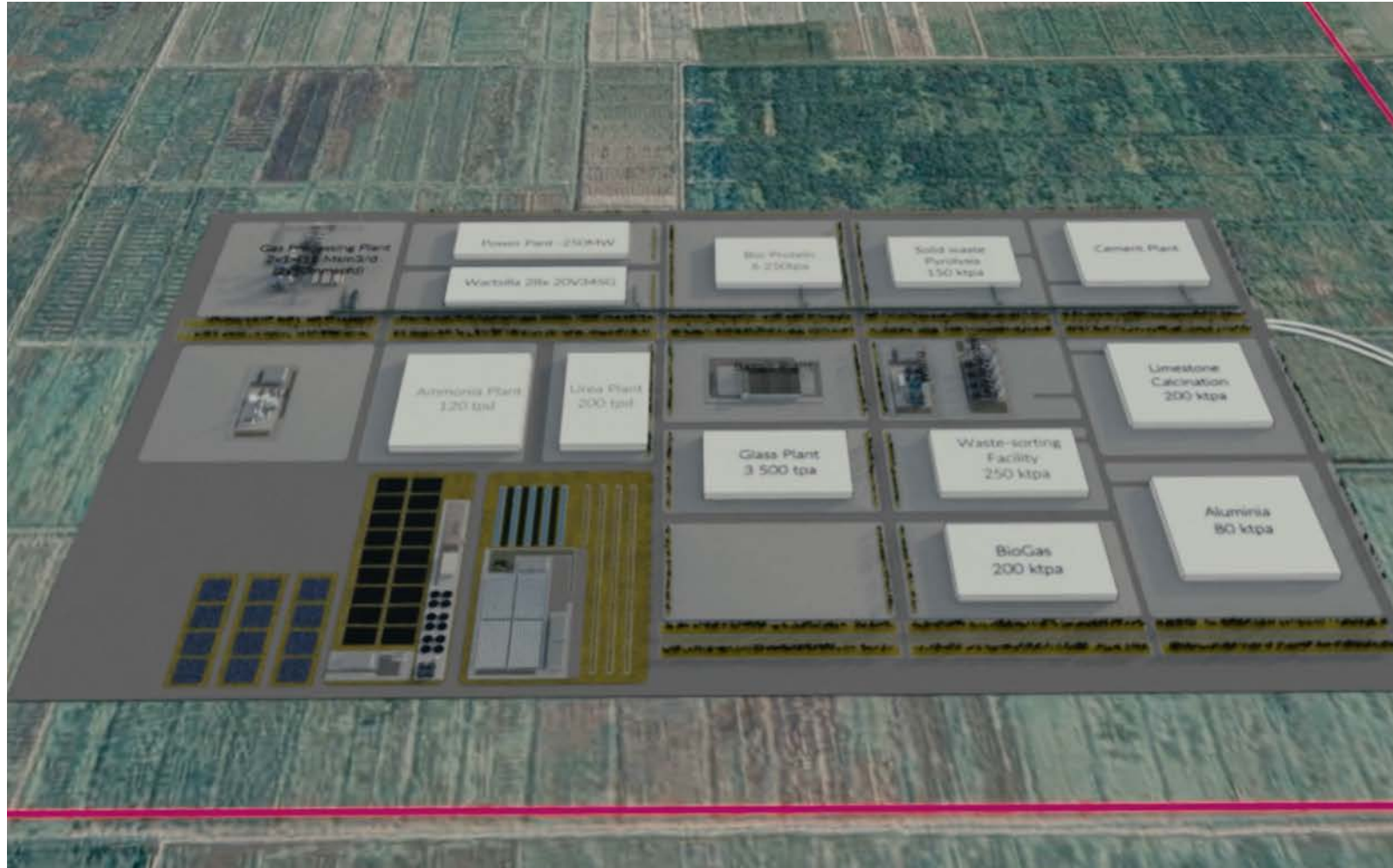
# Gas Utilisation







# Layout of Industrial Area



## An International Framework For Eco-Industrial Parks

December 2017

